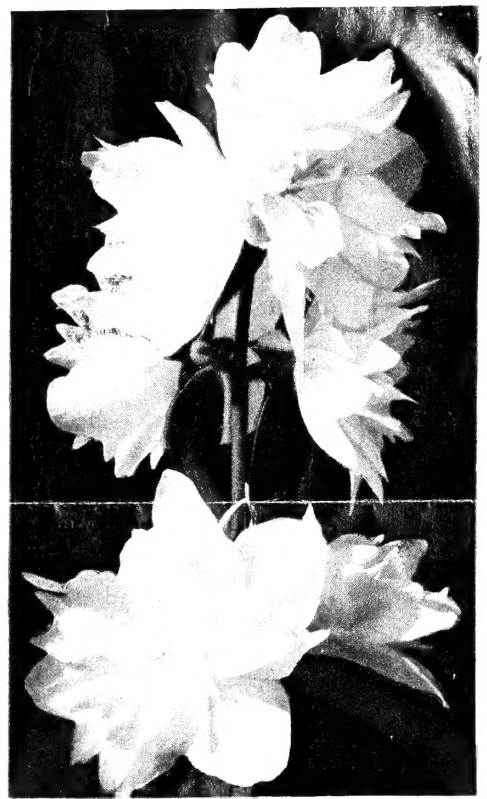




LET US HELP PLAN YOUR FOUNDATION PLANTING. ESTIMATE FREE.

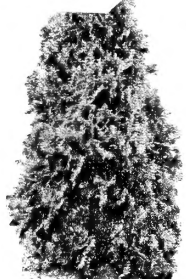
42
1957



Philadelphus
MINNESOTA SNOWFLAKE
Plant Patent No. 538
NEW DOUBLE MOCKORANGE

The most valuable and widely accepted shrub introduction of recent years.

	Each	3 for
18-24 in.	\$1.25	\$3.00
2-3 ft.	1.50	3.75
3-4 ft.	2.00	5.00



18-24 inch \$3.75 each



Siberian Arbor Vitae



PFITZER JUNIPER: Low irregular growth, light green. Does well in shade.
12-18 inch spread each \$2.50
18-24 inch spread each \$4.25



PATENTED FLORIBUNDA
RED PINOCCHIO: (Pat. 812) Rich carmine color. Wild rose fragrance. \$1.50 each.



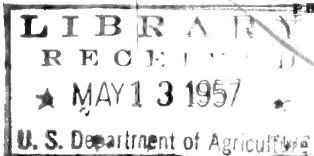
PINK FLOWERING ALMOND \$1.65 each

J. DEPOSE, DIRECTOR

WASHINGTON 25, D. C.

OFFICIAL BUSINESS

PRINTED MATTER



U.S. Dept. of Agriculture
Library
Washington 25, D.C.

PENALTY FOR PRIVATE USE TO AVOID
PAYMENT OF POSTAGE, \$300
(GPO)

*Peters Evergreen Nursery
Sherburn, Minn*

CHOICE EVERGREENS

FOR LANDSCAPE PLANTING

COLORADO BLUE SPRUCE: Choice "Shiners" from the finest block of trees we have ever grown. Will be dug balled and burlapped
 12—15 inches each \$2.50
 15—18 inches each \$3.25
 18—24 inches each \$4.00

CONCOLOR FIR: Will make a most beautiful lawn tree. Even blue color.
 3—4 ft. trees each \$7.50

BALSAM FIR: A rapid growing tree. Valuable both as a lawn tree and windbreak.
 24—30 inches each \$3.00
 18—24 inches each \$2.25

BLACK HILLS SPRUCE: Has proven it's value for this area. A very compact growing tree from little up.
 15—18 inches each \$2.25
 18—24 inches each \$3.00
 24—30 inches each \$3.75

We have a nice lot of good bushy trees, 12—15 inches tall for Windbreak in lots of 10 or more, dug bare root for \$1.00 each.

DUNDEE JUNIPER: Upright form. Dark green color. Grafted
 2—3 foot, \$5.00 3—4 foot, \$6.00
 4—5 foot \$7.50

WELCH JUNIPER: Upright form. The inner foliage is green, the new growth is blue. Very attractive. Grafted.
 3 foot each \$5.50

MOFFETTI JUNIPER: Upright form. Very compact and blue color. A grafted scopolorum
 3—4 foot each \$6.00

CANNARTI JUNIPER: Upright form. Bright green foliage. A grafted sport of virginiana.
 4—5 foot each \$7.50

MUGHO PINE: The dwarf growing pine.
 15—18 inch spread each \$3.00
 18—24 inch spread each \$4.00

SAVIN JUNIPER: Hardy anywhere. Dark green, soft almost whipcord foliage.
 18—24 inch spread each \$3.50

HETZI JUNIPER: Same habit of growth as pfitzer. Foliage a light blue.
 18—24 inch each \$3.75
 24—30 inch each \$4.50

TAXUS OR YEW: A comparatively new evergreen in this area. Holds it's dark green color all thru the winter. Low growing. Will thrive in complete shade.
 15—18 inch each \$4.00
 18—24 inch each \$5.50

CLIMBING VINES

BOSTON IVY: Clings firmly to brick or cement walls.
 Heavy, 2 yr. plants, 75c each

HONEYSUCKLE HECKROTTI: Everblooming, May until frost. Flame-red trumpets lined with gold.
 Heavy, 2 yr. plants, each \$1.00

CLEMATIS: Jackmani, purple; Mme. Edw. Andre, red; Henryi, white.
 each \$1.50

CLEMATIS PANICULATA: Small white flowers. Blooms in the fall
 2 yr. No. 1 \$1.40 each

BITTERSWEET: Plant 2 or more in a group.
 2 yr. No. 1 75c each

ROSES

**BROWNELL EVERBLOOMING SUB-ZERO
HYBRID TEA ROSES**

CURLY PINK. (Pat. 842) Beautiful curled petals borne in clusters. \$1.75 each.

LILY PONS: (Pat. 420) Large white blooms with pure yellow center. \$1.75 each.

ORANGE RUFFELS: (Pat. 1124) Large flowers frilled and ruffled. \$1.75 each

QUEEN O' THE LAKES: (Pat. 1003) One of the finest in a red rose. \$1.75 each.

V FOR VICTORY: (Pat. 543) One of the best in a yellow rose. \$1.75 each.

PATENTED HYBRIDS

FRED HOWARD: (Pat. 1006) Rich yellow buds, tipped with light pink. \$2.00 each.

FORTY-NINER: (Pat. 792) A brilliantly hued bi-color. \$2.25 each.

HELEN TRAUBEL: (Pat. 1028) Variable color, light pink to apricot. \$2.50 each

CRIMSON GLORY: Non-Pat. An old favorite in a dark red. \$1.35 each.

F. K. DRUSCHKI: Non-Pat. Very double, pure white on tall stems. \$1.35 each.

PATENTED FLORIBUNDA

CIRCUS: (Pat. 1382) This new Floribunda is the only ALL American winner for 1955-'56 A gay multi-colored rose. \$2.50 each.

JIMINY CRICKET: (Pat. 1346) Red buds, opening to coral-orange and pink. \$2.25 each.

HARDY RUGOSA ROSES

AMELIA GRAVEREAUX: Bright red, Very fragrant. Blooms till frost. \$1.35 each.

GROOTENDORST SUPREME: Very hardy, red clusters of small roses all summer. \$1.35 each.

HARRISON'S YELLOW: The old standby in a yellow rose. Never fails to bloom. \$1.35 each

CLIMBING ROSES

BLAZE (See front page)

WHITE DAWN: A pure white bloom with a waxy green foliage. \$1.35 each.

FLOWERS

TUBEROUS ROOTED BEGONIAS — Four colors to choose from. Red, white, yellow and pink. These bulbs should be started in March or early April.

4 of any one color \$1.00
 Mixed colors \$2.50 per dozen

LYTHRUM: Mordens pink. The graceful spikes of deep pink flowers is quite a sight when planted in groups or a hedge. Blooms all summer. A hardy perennial—will grow anywhere.
 Heavy 2 year roots 4 for \$1.00

LYTHRUM: Mordens Gleam — A darker color and a spreading habit of growth.
 Heavy 2 year roots 4 for \$1.00

FLOWERING SHRUBS

HYDRANGEA A. G.: Blooms early, also known as "Hills of Snow".
 2—3 ft. each \$1.25

ALPINE CURRANT: A good shrub for either specimen or hedge planting.
 18—24 inch each \$1.25

DWARF NINEBARK: A new dwarf strain. Lovely white flowers in June.
 18—24 inch 75c each; 3 for \$1.75

HONEYSUCKLE: (Zabeli) Red flowers in May, followed by bright red berries. Deep green foliage.
 2—3 ft. Heavy branched, 50c each.

FRENCH LILACS: Chas Joly, a double dark purple; Ludwig Spaeth, A single dark purple; Ellen Wilmont, a double white;
 3 yr. old, 18—24 inch plants \$1.25 each, or 3 for \$3.00

COTONEASTER ACUTIFOLIA: Thick glossy leaves, black berries. Grows anywhere.
 2—3 ft. 75c each; 3 for \$1.75

CRIMSON SPIREA: (Anthony Waterer) Popular, dwarf shrub. Flowers in flat top clusters all summer.
 15—18 inch 75c each.

EUONYMUS ALATUS COMPACTA: A new dwarf shrub. Cork-like square bark. Red autumn foliage.
 15—18 inch each \$1.50

VARIEGATED DOGWOOD: A beautiful tall shrub where contrast of color is desired, bright red bark.
 2—3 ft. plants each \$1.50

FORSYTHIA SPRING GLORY: The first to bloom in the spring. Golden yellow bell-shaped flowers.
 2—3 ft. each \$1.00

HYDRANGEA P. G.: Blooms late, cone shaped pink blossoms.
 2—3 ft. each \$1.25

RED BERRIED ELDER: A very attractive shrub with it's bright red berries all summer
 2—3 ft. plants each \$1.00

SILVERBERRY: It's silvery leaves makes a wonderful contrast among other shrubs.
 2—3 ft. well branched each \$1.00

HONEYSUCKLE, CLAVEY'S DWARF: Very compact habit of growth. Will have many uses as a dwarf shrub.
 12—18 inch each \$1.00

HI-BUSH CRANBERRY: An attractive tall shrub that puts on two shows each season. White flowers in spring, red berries in the fall. 12—15 inch each 75c

SPIREA V. H. (Bridal Wreath) an old favorite. Grows anywhere.
 2—3 ft. 50c each 3 for \$1.30

RED LEAF BARBERRY: A colorful shrub, red leaves all summer. Red berries hang on all winter.
 12—15 inch, 50c 3 for \$1.30

PRUNUS CISTENA: New leaves come out a bright red. Very hardy, dwarf growing.
 18—24 inch, Well-branched each \$1.50

PEACH TREES

Quite a novelty to grow your own Peaches here in Minnesota. These are grown from Pits, small, but good flavor. Must be planted in a sheltered spot.

3 ft. trees each \$1.00

HEDGES

FOR PRIVACY
AND DIVISION OF PROPERTY

COTONEASTER: Thick glossy green leaves, small pink flowers, followed by an abundance of black berries makes it ideal for a screen. Can also be sheared to desired height. Plant 18-20 inches apart. 1 year heavy seedlings.
12—15 inch 100 plants for \$17.50

ZABELI HONEYSUCKLE: It's dark green foliage makes this one of the best informal hedge plants. The red flowers followed by bright red berries makes this an attractive hedge all summer, if left to grow naturally. Plant 24—30 inches apart.
18—24 inch 100 plants for \$20.00

POLISH PRIVET: A very hardy strain of privet. Makes a very attractive, neat looking hedge without shearing, or can be sheared to any height.
12—18 inch 100 plants for \$20.00

Windbreak Trees

For Protection Against Snow and Wind Be sure to make the very outside row to the north and west, Honeysuckle.

BELLA ALBIDA HONEYSUCKLE: This is the only variety that should be used for Wind break planting. Don't be fooled into planting seedlings of some southern grown stock. None will compare with this old standby. One row with plants set 4 ft. apart in the row, is all you need to stop the snow. Heavy field grown, from cuttings well rooted.
2 to 3 ft. branched 100 for \$22.50
18 to 24 inch branched 100 for \$20.00
12 to 18 inch branched 100 for \$17.50
6 to 12 inch liners 100 for \$15.00

LAUREL LEAF WILLOW: Heavy 1 year old. Well rooted.
3 to 4 ft., \$9.00 per 100

GOLDEN WILLOW: Heavy 1 year old. Well rooted 5 to 6 ft. \$10.00 per 100

GREEN ASH: More ash should be planted in the windbreak. Dependable, long lived. Two year old trees.
3 to 4 ft. \$10.00 per 100

AMERICAN ELM: One of the very best windbreak trees for this area.
2 to 3 ft. \$7.50 per 100

SMALL FRUITS

STRAWBERRIES — June Bearing
Dunlap 100 for \$3.00
Beaver 100 for \$3.00

STRAWBERRIES — Everbearing
New Red Rich 100 for \$15.00

GRAPES — Concord, bears large bunches of sweet, juicy, blue-black grapes every year. Requires winter protection. 3 for \$1.25

GRAPES—Fredonia, ripens 3 weeks earlier than Concord. Requires winter protection. 3 for \$1.25

GRAPES — Moonbeam, a new white grape, Minnesota introduction, that really is a dandy. Sweet as sugar, compact bunches, hardy. 2 year No. 1 plants, 65c each.

RHUBARB — Valentine red, Very tender stalks of extra large size. Tremendous yield. No. 1 divisions, 65c each.

ASPARAGUS — Mary Washington, a very good variety for our soil. Easy to grow.
25 plants for \$1.50 100 for \$5.00

PLANT AN ORCHARD

APPLE TREES

4 to 5 ft. \$1.75 each

ORIOLE: The earliest high quality, good size apple. Ripens in August.

BEACON: All red, bears young and will ripen in early Sept. Extra good for pies.

MINJON: A dark red fall apple. Truly a Minnesota Jonathan.

PRAIRIE SPY: Late fall apple. One of the best of the recent introductions.

YELLOW TRANSPARENT: The well known early summer apple. Always in demand.

HARALSON: A long keeping winter apple. Large, red, solid, crisp and juicy.

FIRESIDE: A yellow and red apple that has a distinct flavor all its own. Keeps all winter.

WHITNEY CRAB: This well known early crab is still in big demand. Include one or more in your planting.

RED DELICIOUS: Large red summer apple. This tree has produced good crops here for years.

MALINDA: An old time favorite. Good keeper. **GOLDEN DELICIOUS:** Grown from a tree right here at home. Like the red delicious, it has produced well for several years.

REDWELL: A new early winter apple from University Farm.

NORTHWESTERN GREENING: A popular old winter apple, with large smooth green fruit.

WEALTHY: One of Minnesota's most popular late fall apples.

NEW LAKELAND: A solid red, fall apple with excellent cooking quality. Keeps well.

RED FLESH CRAB: Fruit is red all thru. A little smaller than whitney.

CHESTNUT CRAB: A new Minnesota introduction.

DOLGO CRAB: Bears heavy crops of bright red, tart fruit.

PLUM TREES

1 year old from buds. \$1.75 each

KAGA: A good red plum for canning. One of the best as a pollinizer.

SUPERIOR: Originated by the Minnesota Fruit Breeding Farm. Very large, delicious red plum. Rich sweet flavor.

PIPESTONE: Extra early, jumbo size. Another fine Minnesota introduction.

PEAR TREES

PARKER: One of the sweetest, juiciest pears that grows. Ripens in early Sept.

GOLDEN SPICE: A flavorful new canning pear that's hardy throughout Minnesota. Plant one of each for best results.
2 trees (one of each) \$4.00

NEW DWARF CHERRY TREES

NORTH STAR: A dwarf pie cherry from U. of Minn. Big mahogany-red cherries on dwarf 5 to 7 ft. trees.

1 year old trees, 3 ft. each \$2.00

KROEKER'S CHERRY: Another dwarf cherry that has proven its ability to produce top quality fruit over a period of years. Big red cherries on 5 to 7 ft. trees. Excellent for pies.

1 yr. old trees, 3 ft. and up each \$2.00

SHADE and ORNAMENTAL TREES

FOR BEAUTY AND COMFORT

NEW MORAINÉ LOCUST: (Pat. 836) A perfect shade tree, fast growing and long-lasting. No seed pods, no thorns. It's a beauty.
5—6 foot trees, branched. each \$5.00

CRIMSON KING MAPLE: (Pat. 735) Comes out red in the spring and holds its color all summer. A brilliant new tree.
6—7 foot whips \$4.75 each
6—7 foot field grown, 2 year. \$6.50 each

SCHWEDLERI MAPLE: One of the best. Color changes from red in spring, green in summer to yellow in fall.
6—7 foot field grown, 2 year \$5.00 each

NORWAY MAPLE. Rapid grower, with large green leaves all summer. A very desirable tree.
7—8 foot, field grown, 2 year \$4.50 each

HARD OR SUGAR MAPLE: One of our finest shade trees. A native Minnesota tree, green leaves that turn to yellow and scarlet in fall.
6—8 foot trees branched \$4.50 each

WHITE CLUMP BIRCH: For that "natural look," plant three trees in the same hole.
2—3 ft. trees potted 3 for \$2.00

CUT LEAF WEEPING BIRCH: White bark, graceful drooping branches and finely cut leaves.
7—8 ft., well branched \$5.75 each

LAKE CITY ELM: A grafted form of American elm, selected for their uniformity, good shape and fast growth.
8—10 ft., well branched \$3.00 each
10—12 ft., well branched \$6.00 each

AMERICAN ELM: Hardy fast growing, dependable.
10—15 ft. trees \$5.00 each
8—10 ft. trees \$3.50 each
6—8 ft. trees \$2.50 each

GREEN ASH: Dependable, long lived, good shade trees. Hardy everywhere.

6—8 ft. trees, transplanted \$1.75 each

LOMBARDY POPLAR: Widely used for tall screens and accent plants. Glossy leaves that shimmer in the breeze.

5—6 ft., straight whips 50c each
4—5 ft. whips 10 for \$3.50

BOLLEANA POPLAR: Green bark, light sil very leaves.

10—12 ft., heavy branched \$3.50 each

TOBA HAWTHORNE: (Thornapple) A new budded variety, A beautiful small tree.

3—4 ft. \$2.00 each

HOPA CRAB: A beautiful, upright growing tree. Bright Pink flowers. Fruits red inside and out.

Heavy Branched 5-6 ft. \$2.25 each

MT. ASH, AMERICAN: Well branched trees.
5—6 ft. \$2.75 each

WILLOW, Niobe Weeping: Needs lots of room to develop. Golden yellow bark, narrow green leaves.

Well branched, 1 yr. old each \$1.00

WILLOW, Pussy: A new French Hybrid. Popular on account of the extra large catkins, in April before the leaves come out.

Well branched, potted each \$1.25

FERTILIZER

VERTAGREEN ROSE FOOD: A 5-10-5 mixture, 10 lb. bag \$1.40 5 lb. bag 85c

BONE MEAL: 10 lb. bag \$1.00

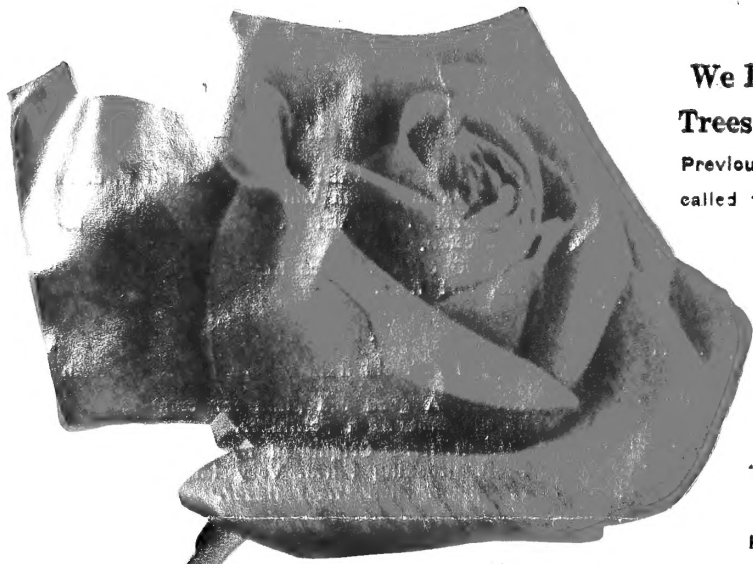
SHEEP MANURE 25 lb. bag \$1.50

NORTHROP KING'S HI NITROGEN LAWNFOOD

A 10-6-4 For Turf and Trees

25 lb. Bag \$2.00

50 lb. Bag \$3.50

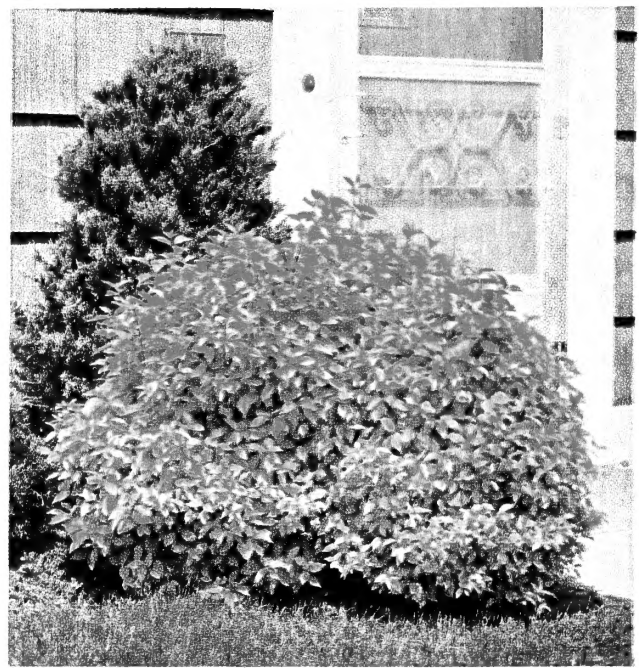


CHRYSLER IMPERIAL: (Pat. 1167) A very dark red, of good size. \$2.50 each.

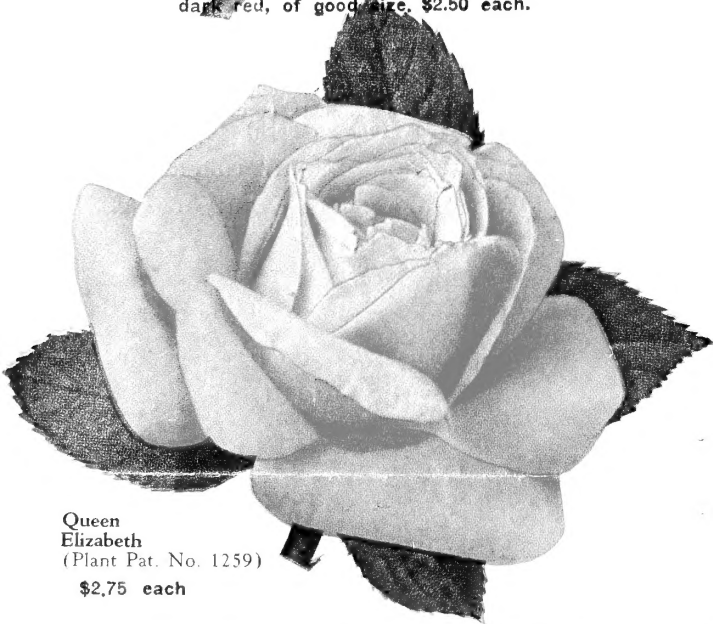
**We Do Not Dig
Trees on Sunday!**

Previous order may be called for on Sundays.

TURN TO
INSIDE
PAGE FOR
COMPLETE
LIST OF
ROSE
VARIETIES
WE HAVE
TO OFFER.



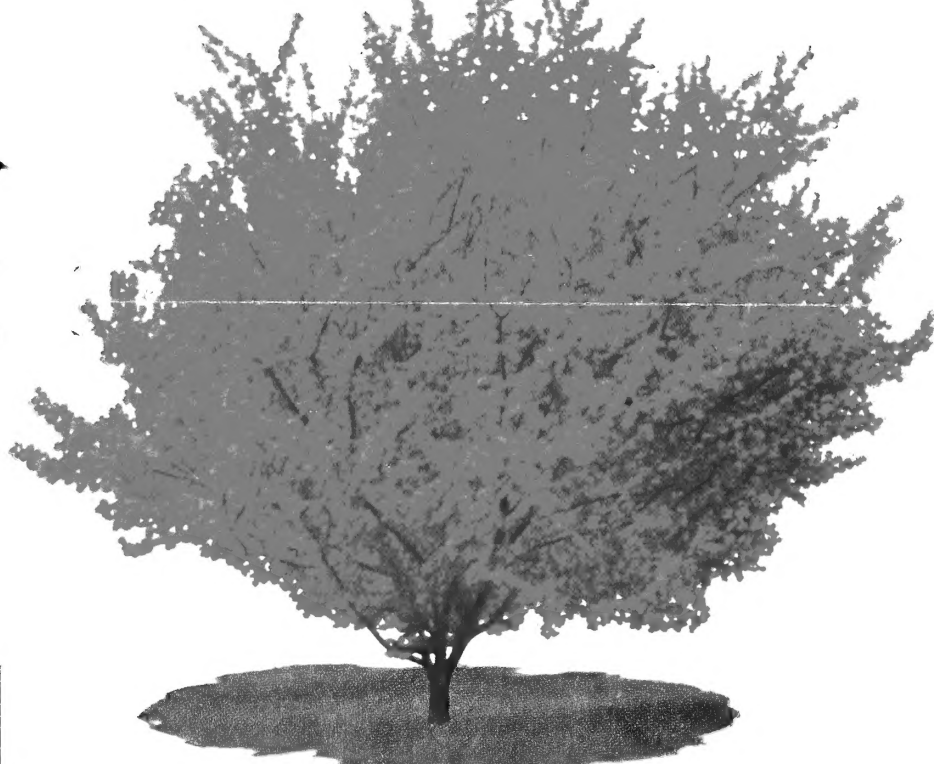
PHILADELPHUS AUREA: (Golden Mook Orange) Grows to a height of only 3-5 feet 15-18 inch plants each \$1.70



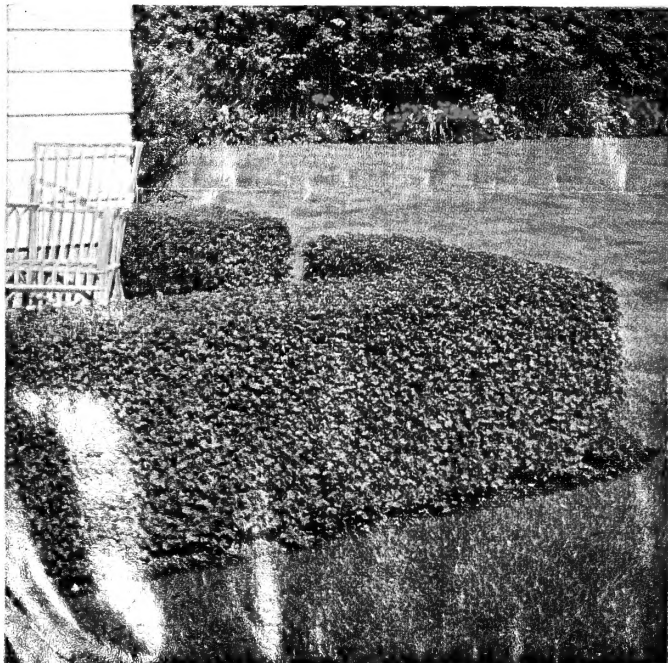
Queen Elizabeth
(Plant Pat. No. 1259)
\$2.75 each

WE POT ALL OUR ROSES

WE USE A SPECIALLY PREPARED POTTING SOIL. THEY ARE GROWING WHEN YOU GET THEM AND CAN BE PLANTED ANY TIME WITHOUT LOSS. ALL OUR ROSES ARE GUARANTEED TO GROW AND BLOOM THE FIRST YEAR.



ALMEY FLOWERING CRAB 4-5 feet \$2.75 each.



**Dwarf Ninebark
HEDGE**

This New Plant makes an ideal formal hedge. Very dense, easily sheared, Dwarf upright growth. Plant 18-24 in. Apart
25 plants for \$7.50



Peace (Plant Pat. No. 591) \$2.50 each

1957
Peters Evergreen Nursery, Sharburn, Mo.